



Commercial Training Program

ASSA ABLOY

The global leader in
door opening solutions.

Advance your knowledge of commercial door hardware products

The ASSA ABLOY Australia Commercial Training Program is a program developed for people new to the commercial side of the door hardware industry – typically suited to new employees and those with up to 3 years experience in working with ASSA ABLOY's commercial door hardware products.

With over 25,000 different items in our Australian commercial door hardware range alone and the growing complexities of Building Codes, Australian Standards and other regulations there is a great need for training within our industry.

With the knowledge you will gain during the Commercial Training Program, you will be better equipped to choose the right products in a range of applications.

Program content

The Commercial Training Program covers the following areas:

- Introduction to the commercial environment, standards and building codes
- Mortice locks
- Door furniture
- Key-in-knob and key-in-lever locks
- Mechanical digital locks
- Panic exit devices
- Keying systems
- Door closers
- Electro-mechanical products
- General hardware
- Padlocks
- Besam and Pyropanel introduction

Learning outcomes

The Commercial Training Program will provide:

- A thorough understanding of the impacts of regulations on selection of door hardware
- Hands on experience working with the products to perform common set-up and adjustments
- Practical experience working with product

catalogues to resolve common questions and ascertain part numbers for specific products

- Important information regarding suitability of products to particular applications
- Details of the key features of the different product ranges
- Printed training program manuals covering the 12 major areas of the program
- Overview of the installation process
- Overview of the range of accessories and options in each product group
- Experience in the range of functions available within the different product groups
- Opportunities for discussion with our trainers who have many years of experience working with the products and marketplace

On satisfactory completion

Participants will receive a framed certificate of completion from ASSA ABLOY and will have a good base knowledge of commercial door hardware to build on over their careers in the industry.

Duration

The Commercial Training Program is run over two full days of face-to-face training.

Two weeks prior to the commencement of the face-to-face training, participants are required to complete approximately 1-2 hours of pre-work. This is mailed to the participant, to be completed before the face-to-face training. The pre-work ensures all participants have a pre-determined understanding of some of the basics of the commercial environment and conserves valuable class time to focus on products.

On completion of the face-to-face training, participants are given a written assessment task, to be completed and mailed back to ASSA ABLOY. The assessment task is designed to consolidate the training and ensure participants have a good comprehension of the topics covered.

Entry requirements

To ensure the Commercial Training Program will be a beneficial investment of your time, please ensure that you meet the following guidelines:

- Currently working within the commercial door hardware industry, or progressing towards a role in the field
- Approval of workplace manager

Where and when is the Commercial Training Program run?

The program is run in the following locations:

- Oakleigh, Vic
- Adelaide, SA
- Sydney, NSW
- Perth, WA
- Rocklea, Qld
- Tasmania

The program runs approximately every two months in each location. For locations and dates, log into the Business Partners Portal at www.lockweb.com.au and follow the link to Training Programs.

How to enrol?

Complete the attached application form and return it to the ASSA ABLOY Australia Training Manager.

Training program costs

The Commercial Training Program is run at no charge to ASSA ABLOY customers and business partners. Where travel and/or accommodation is required, the participant will need to cover his/her own expenses.

Other training programs

We also run a Retail Training Program, Industrial Training Program, and other specialist training from a variety of locations. Check the details at www.lockweb.com.au or alternatively, your sales representative can provide details of our other training programs. Additionally, if you have a specific request, let us know, we may be able to tailor a program to suit your needs.



Application form Commercial Training Program

ASSA ABLOY

Name: _____

Company: _____

Address: _____

State: _____ Post code: _____

Phone: (____) _____ Fax: (____) _____

Mobile: _____

Email: _____

Position in company: _____

Years in the industry (please circle): less than 1 1-2 3-5 more than 5

Managers' name and phone no: _____

ASSA ABLOY representatives' name: _____

Preferred training program session:

Location: _____

Dates: _____

Or

Please contact me to arrange a time and location (circle if required)

Do you have any special dietary or physical needs?

When you have completed this form, please fax to:

Fax: (03) 8574 3715

Or

Mail to:

ASSA ABLOY Australia Training Manager

PO Box 42, Oakleigh, Vic 3166

Once your application is received, you will receive written notification of your enrolment. We may contact you if there are any difficulties in processing the request.



1 Lockwood 7726 adjustable power door closer

2 Lockwood 256 series with chrome molybdenum shackle

3 Abloy Protec key

4 Trimec ES2000 electric strike

5 Door furniture Aquileart® Robert Watson Centre A2 lever

6 Brass door furniture Symphony® 1220 series round rose Operetta #54 lever

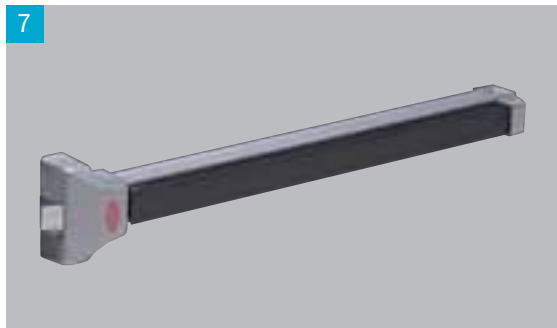
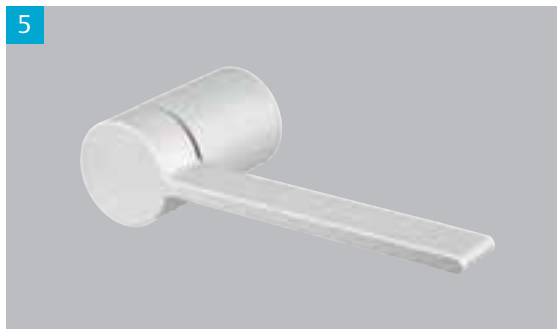
7 Lockwood 9000 series panic exit device (PED)

8 Lockwood 3572 mortice lock

9 Lockwood 930 series key in lever lockset

10 Detention furniture Lockwood 222D emergency turn with lever

11 Door furniture Lockwood 1800 series brass plate with Veloce #53 lever





ASSA ABLOY

Visit us at www.assaabloyasiapacific.com

ASSA ABLOY Sales Offices & Authorised Agents in Asia Pacific

Victoria – Head Office

Telephone +61 (0)3 8574 3888
Facsimile +61 (0)3 8574 3788

Queensland South

Telephone +61 (0)7 3373 5200
Facsimile +61 (0)7 3373 5256

Queensland North

Telephone +61 (0)7 4779 0177
Facsimile +61 (0)7 4775 1480

NSW – Commercial

Telephone +61 (0)2 8543 3700
Facsimile +61 (0)2 9531 7944

NSW – Residential

Telephone +61 (0)2 9624 2666
Facsimile +61 (0)2 9620 9340

New South Wales – Abloy

Telephone +61 (0)2 9882 6066

South Australia

Telephone +61 (0)8 8139 0401
Facsimile +61 (0)8 8364 1975

Western Australia

Telephone +61 (0)8 9227 9588
Facsimile +61 (0)8 9227 8913

Tasmania

Telephone +61 (0)3 6223 5404
Facsimile +61 (0)3 6224 0435

Auckland - Residential

Telephone +64 (0)9 415 7111
Facsimile +64 (0)9 415 7222

Auckland - Sales Office

Telephone +64 (0)9 634 5590
Facsimile +64 (0)9 634 5589

Christchurch - Sales Office

Telephone +64 (0)3 379 4810
Facsimile +64 (0)3 379 4819

Wellington

Telephone +64 (0)4 913 4214
Facsimile +64 (0)4 913 4213

Security Merchants

Security Merchants Australia

Telephone +61 (0)3 9558 8455
Facsimile +61 (0)3 9558 8466

Security Merchants NZ

Telephone +64 (0)9 355 9240
Facsimile +64 (0)9 307 1752

Export Department

Telephone +61 (0)3 8574 3888
Facsimile +61 (0)3 8574 3789

Asian Offices

ASSA ABLOY – Malaysia
ASSA ABLOY – Singapore
ASSA ABLOY – Thailand
ASSA ABLOY – Hong Kong
ASSA ABLOY – Shanghai
ASSA ABLOY – Beijing
ASSA ABLOY – Korea
ASSA ABLOY – India
ASSA ABLOY – Japan

Contact the Export Department, Australia for details.

